

Omagh Gardening Society Images

There are four master files (PSD)

- **Slideshow** measures 300 pixels (w) by 375 pixels (h)
Image to be cropped to 300px (w) x 375px (h) (72 ppi)
- **Landscape** measures 720 pixels (w) by 576 pixels (h)
Image to be cropped to 680px (w) x 500px (72ppi) to allow for text and background
- **Portrait** measures 576 pixels (w) by 720 pixels (h)
Image to be cropped to 536px (w) x 650px (h) (72ppi) to allow for text and background
- **400 x 267** measures 400 pixels (w) by 267 pixels (h)
Image to be cropped to 400px (w) x 267px (h) (72ppi)

Directories on the Website

- **Slideshow** used to display the images on the home page (stories/slideshow)
- **Local Garden Visits** (stories/garden_visits)
- **Outings** (stories/outings)
- **St Patricks Day** (stories/st_patrick)
- **Garden Competitions** (stories/garden_compet)
- **Spring Show** (stories/spring_show)
- **Spring Show 2011** (stories/spring_show_2011)
- **Archive** (stories/history)

Note: images must be uploaded to the directory if required for that slideshow. Individual images may be uploaded for a particular page.

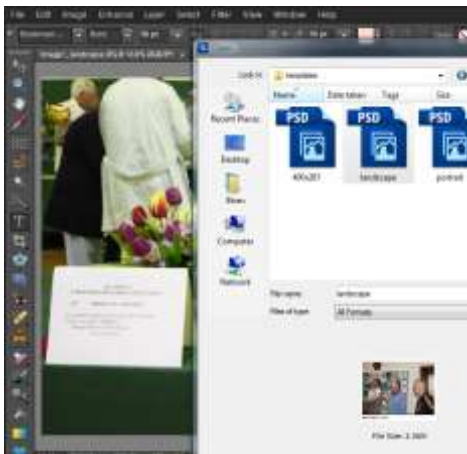
User Guide



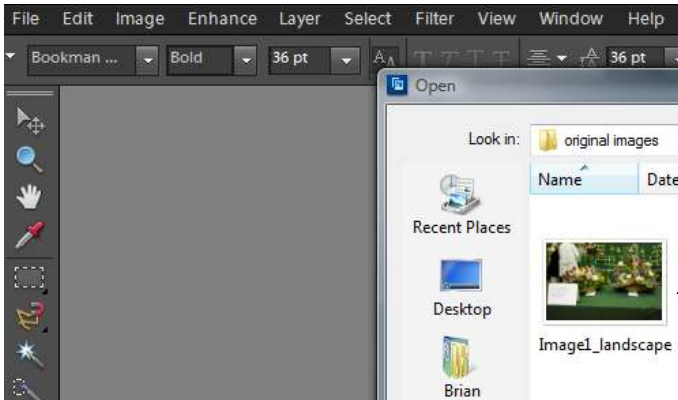
Double click on the short-cut from the desktop



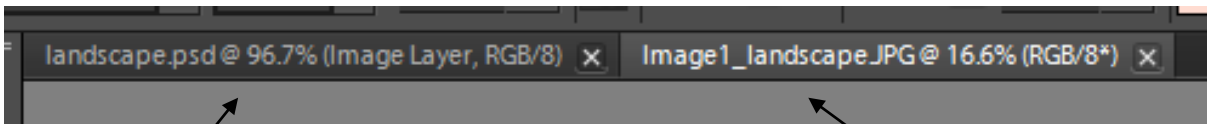
Click Edit



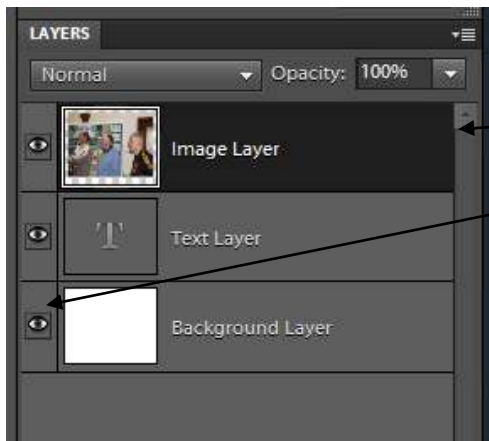
Click File + Open + landscape (inside the folder "templates" in the Photoshop Tutorial folder



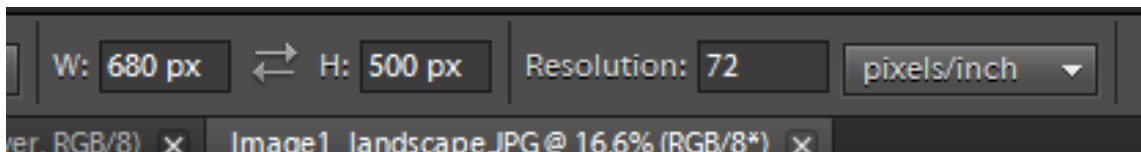
Click File + Open + Image1_landscape (inside the folder "original images" in the Photoshop Tutorial folder



You will notice both images are available at the top of the page and you can switch from one to the other by clicking on either landscape or Image1_landscapeJPG



On the landscape template you will notice three layers. The layer in use at the moment has a black background so in this case its "Image Layer". All three layers are visible by clicking on the "eye" you can turn visibility on or off.



Moving to Image1 we set the crop 680 px by 500 px resolution 72 ppi and using the crop tool we select the part of the image we wish to keep



To apply the crop click the accept button

And then to copy the image to the template press <CTRL> + A (select all) and then <CTRL> + C (copy) and then click back to the template and press <CTRL> + V (paste). If all goes well you should get the following:



Notice there are now four layers. The new layer is called “Layer 1” and needs to be moved up a bit use the “Move Tool” to do this. Also “Image Layer” can be turned off by clicking on the “eye” tool or removed altogether by activating the layer by clicking on it and right click and select “delete layer”.

You are now in a position to Save the file – Select “File” + “Save for Web”, select JPEG as the file type and give the file a name. If the images are required to be in order on the slideshow number them as image001, image002, image003 and not image1, image2, image3 to ensure that they are in the correct order.

Uploading Image to Directory

Go to the Omagh Gardening Society website
<http://www.omaghgardeningociety.org>
and login.

Login

Username

Password

Remember Me

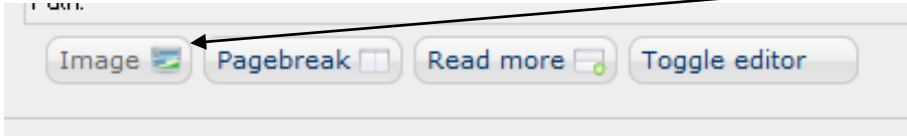
Login

- [Forgot your password?](#)
- [Forgot your username?](#)

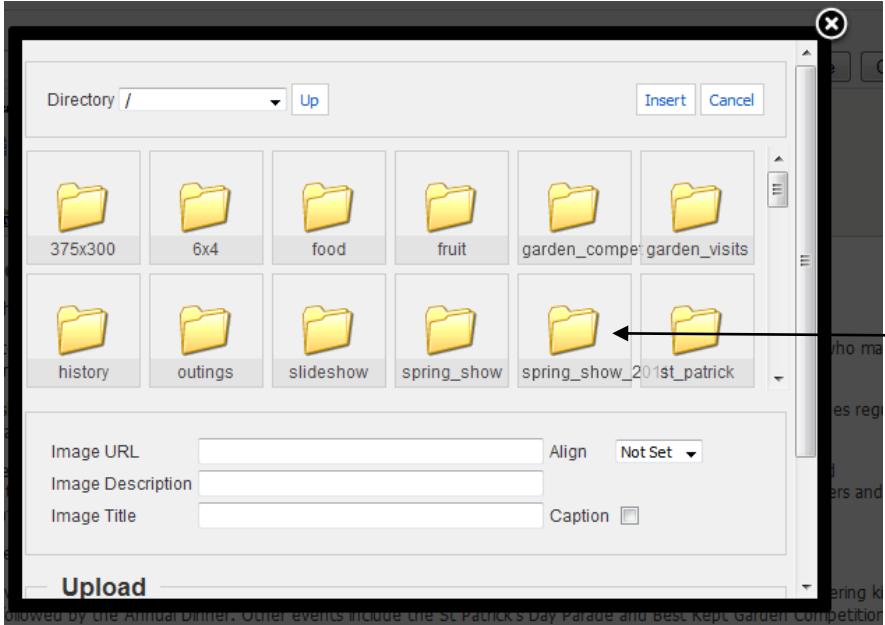
Last Updated on Monday, 06 February 2012 11:07



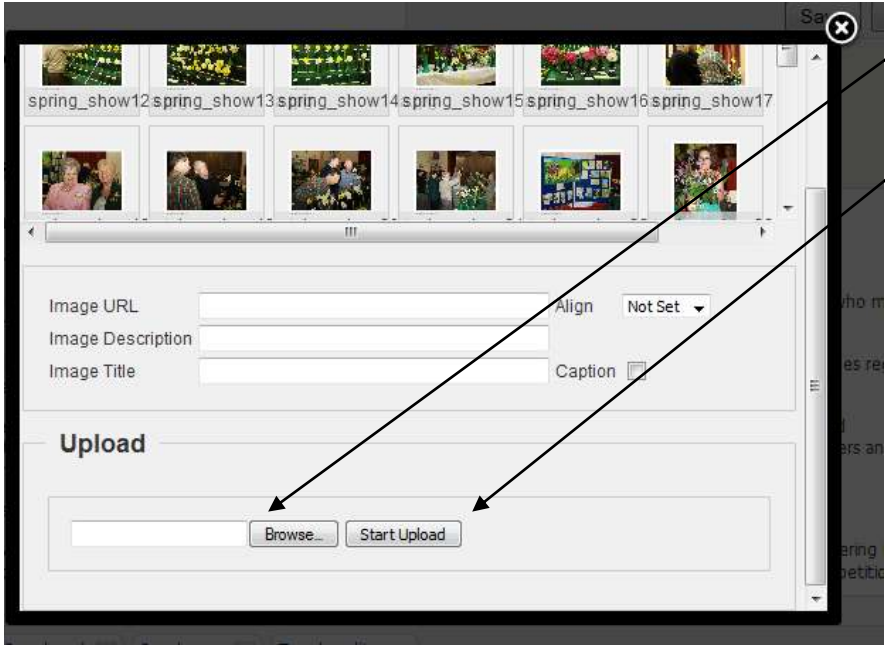
Click "Edit" on any page



Click "Image"



Open the "Directory" where you want the image to appear e.g. spring_show_2011



Browse and select the image you want to upload from your computer and once selected click "start upload" and the image will be uploaded to the directory selected.